

ACCREDITED SOLUTION

SAILOR[®] – D-Link DWL-G730AP Wireless Router



Document Name: SAILOR – D-Link DWL-G730AP Wireless Router

Revision: E

Introduction: This document describes the configuration of the SAILOR 250/500 terminal and the DWL-G730AP D-Link AirPlus™ G Wireless Pocket Router/AP from D-Link Systems Inc.

Typical Users: ▶ Any user who needs to be wireless connected to the SAILOR 250/500 terminal

Product Description: The pocket-sized DWL-G730AP gives all the features of a full-size router/access point with pocket-size convenience and portability. Experience the convenience of wireless networking with colleagues onboard and get wireless access for wireless phones such as the Thrane wireless IP Phone or other SIP compliant wireless phones.

With 3 different operating modes, the versatile DWL-G730AP can be used as a portable access point, AP client or router.

At up to five times the speed of previous wireless devices (maximum wireless signal rate up to 54Mbps*), you can work faster and more efficiently, increasing productivity. With the DWL-G730AP, bandwidth-intensive applications like graphics or multimedia will benefit significantly because large files are able to move across the network quickly.

The D-Link AirPlus™ G DWL-G730AP Wireless Pocket Router/AP is an 802.11g high-performance, wireless device that is also compatible with 802.11b devices. It is an ideal way to extend the reach and number of computers connected to your wireless network.

The DWL-G730AP is capable of data transfer rates up to 54Mbps*, when used with other D-Link AirPlus™ G products, and can be integrated into a large network.

D-Link Systems Inc. contact details:

E-mail <mailto:support@dlink.com>
Phone +1 714 885 6000
Web site <http://www.dlink.com>

Thrane & Thrane contact details:

E-mail <mailto:solutions@thrane.com>
Phone +45 3955 8800
Web site <http://www.thrane.com>

Tested on products:

SAILOR 250 Software version: N/A
SAILOR 500 Software version: 1.01, build Build-bganx_bdu_aa-4

D-Link:

DWL-G730AP Firmware Version: 1.10 , Tue, 04 Oct. 2005

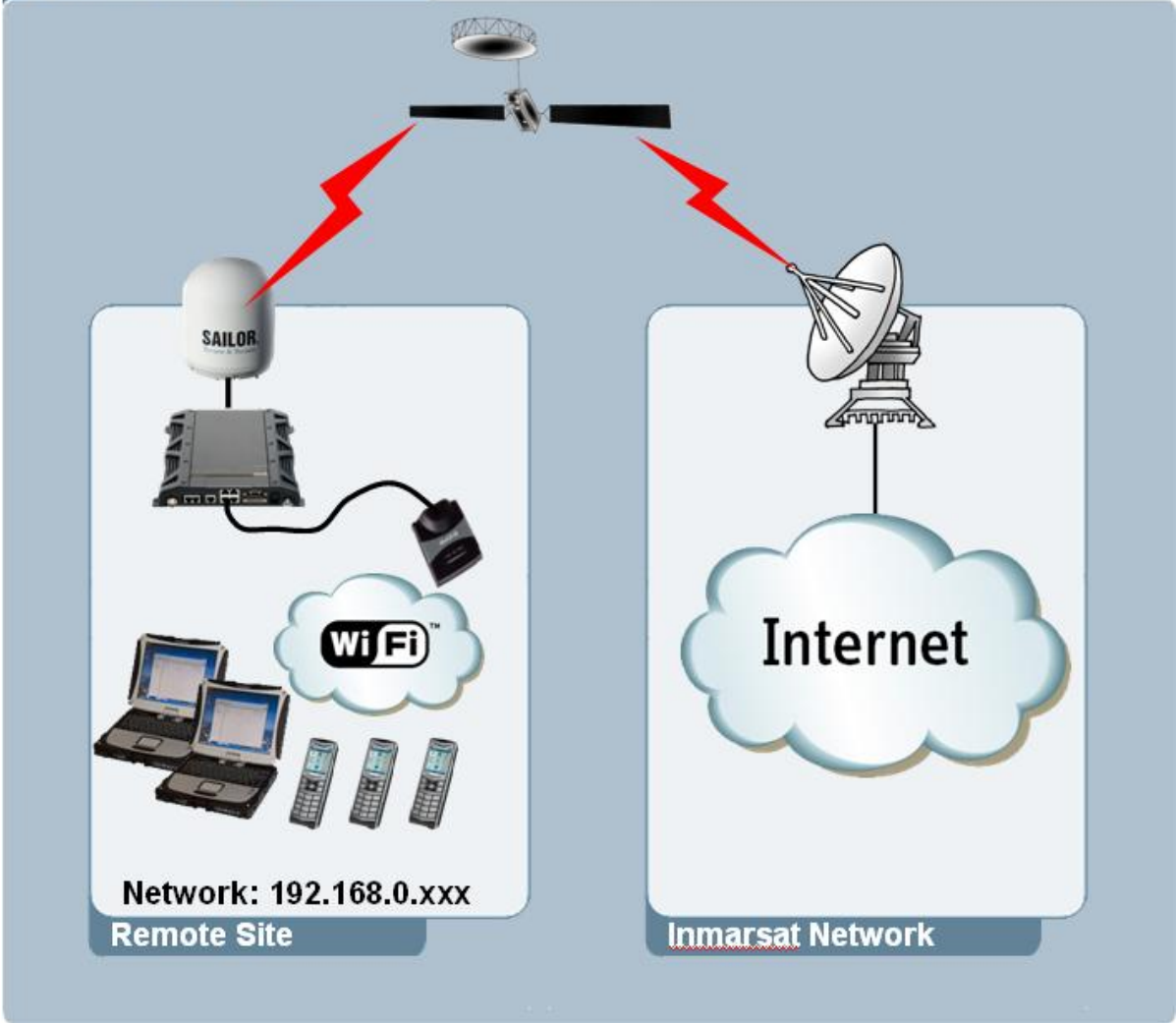
Instructions:

The system comprising of the SAILOR 250/500 terminal and the DWL-G730 Pocket Wireless Router can be set up in many different ways. In this solution it is decided that the DWL-G730 Pocket Wireless Router will be configured in Access Point Mode so the DWL-G730 Pocket Wireless Router is transparent and the wireless connected devices gets their IP addresses directly from the SAILOR terminal.

See the system setup on below picture 1 below:

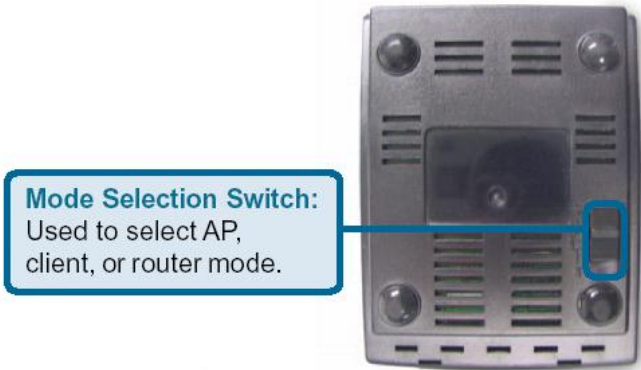


System Overview



Picture 1: System Setup

The configuration of the DWL-G730 Pocket Wireless Router will be to switch it to AP Mode, see picture 2 below of the bottom of the DWL-G730 Pocket Wireless Router:



Picture 2: Mode Selection Switch

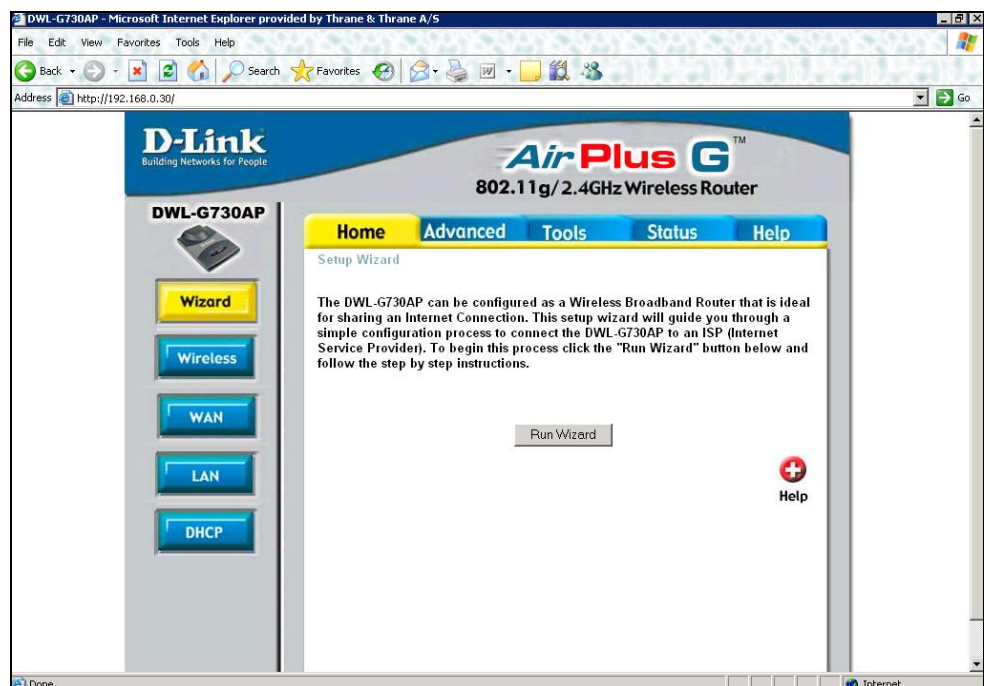
Set the switch to AP Mode.

Now configure the DWL-G730 Pocket Wireless Router from a PC either via the wireless network or through its Ethernet interface.
Connect to the router using e.g. Internet Explorer opening the built-in web interface at <http://192.168.0.30> and use the username: admin and let the password be empty to get access to the configuration. See picture 3 below:



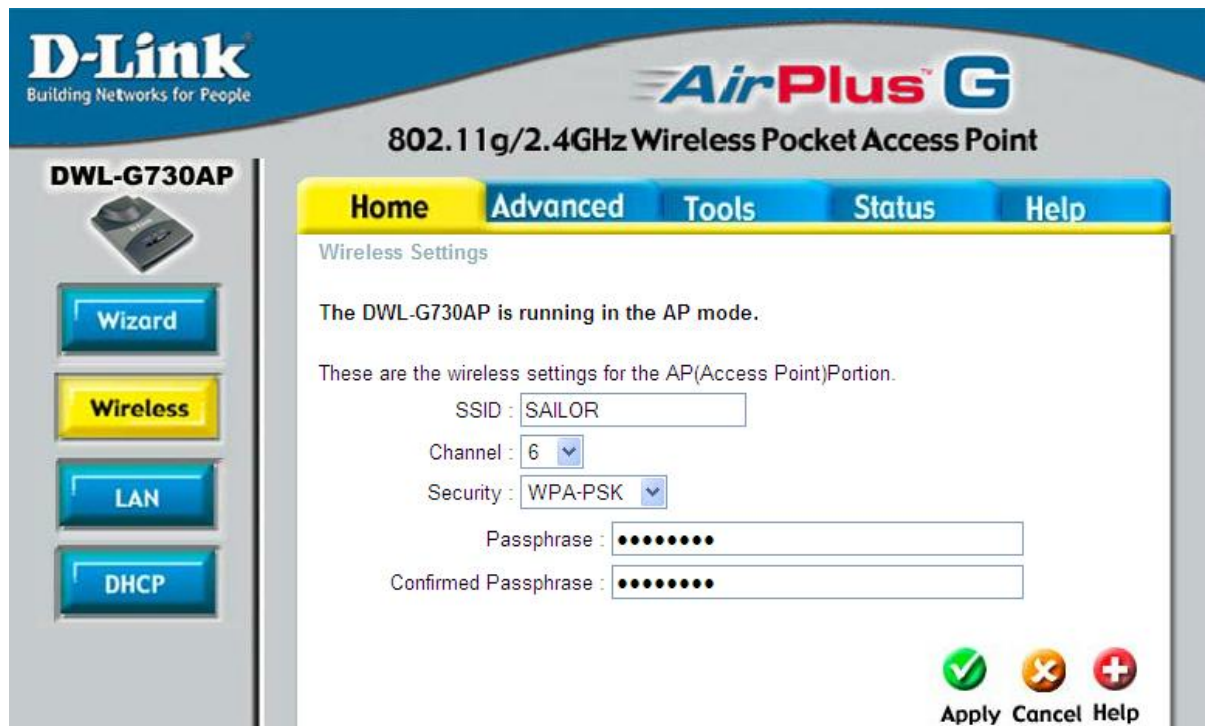
Picture 3: Login Screen

After login the following web page will appear as shown in picture 4 below.



Picture 4: DWL-G730 Web Interface

Now press the Wireless button to show the Wireless web page settings. See picture 5 below.



Picture 5: Wireless Security Settings

Change the SSID to a name of your choice. In this test the DWL-G730 Pocket Wireless Router SSID is set to: "SAILOR". Set the preferred security option. Remember to press Apply when done.

The SAILOR 250/500 terminal was configured with factory default settings. IE: IP 192.168.0.1 and Default Network User Group.

It is strongly recommended to take security precautions when working with wireless LANs. Consider to use all or some of the following security mechanisms:

1. Change the default SSID.
2. Disable SSID Broadcast.
3. Change the default password for the Administrator account.
4. Enable MAC Address Filtering.
5. Change the SSID periodically.
6. Change the WEP encryption keys periodically.

For information on implementing these security features, refer to the Product manual.

Note:

This accredited solution has only been tested with the SAILOR 500 system, but will most likely also work with the SAILOR 250 system as these two systems consist of the same SAILOR terminal (BDU).

Tested:

All tests performed with a Compaq nc6400 laptop PC with built-in wireless network card.
#1: Wireless Web browsing to Internet
#2: Wireless access to SAILOR built-in web interface
#3: Connect to SAILOR built-in SIP server using X-Lite Software Phone
#4: Make and receive phone calls using X-Lite Software Phone.

Information in this document is subject to change without notice and does not represent a commitment on the part of Thrane & Thrane A/S.
© 2007 Thrane & Thrane A/S. All rights reserved. Printed in Denmark.