

## ACCREDITED SOLUTION

SAILOR 250/500 – D-Link DWL-2200AP



Document Name: SAILOR 250/500 – D-Link DWL-2200AP

Revision: B

Introduction: This document describes the D-Link DWL-2200AP wireless 108G access point powered by PoE (Power over Ethernet) from the SAILOR 250/500 FleetBroadband terminal.

Typical Users: 

- ▶ Merchant Vessels
- ▶ Yachts

Product Description: The DWL-2200AP delivers robust wireless performance with wireless data transfer rates of up to 108Mbps. This, coupled with the 5dBi high gain antenna, creates a superior far-reaching wireless network. This Wireless Access Point is fully compatible with the IEEE 802.11b and 802.11g standards.

The DWL-2200AP provides maximum wireless security by supporting both Personal and Enterprise variants of both WPA-2 (Wi-Fi Protected Access 2) and WPA for optimal data protection. Other security features included in this Access Point are MAC Address Access Control Lists (ACL), Wireless LAN segmentation, SSID Broadcast Disable, and support for Advanced Encryption Standard (AES).

With integrated PoE support, the DWL-2200AP provides everything needed to easily set it up with the SAILOR 250/500 powering it.

The DWL-2200AP gives easy access for the crew to use their laptop or Wifi enabled cellular phones for web browsing, email and chat.

D-Link contact details: 

E-mail	See D-Link's website
Phone	+1 877 354 6555
Web	<a href="http://www.dlink.com">http://www.dlink.com</a>

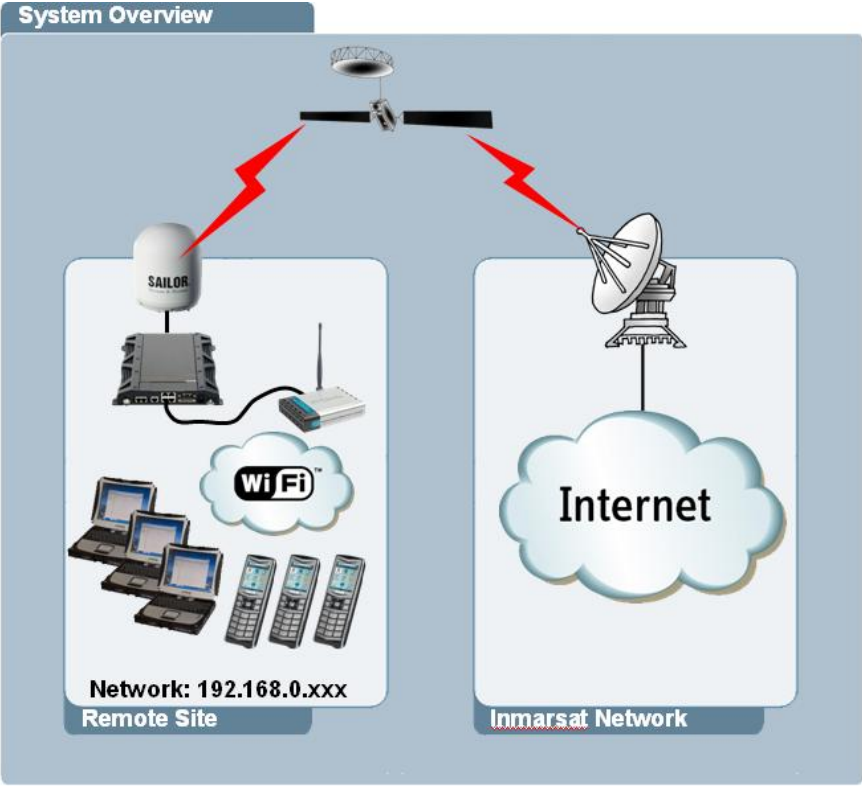
Thrane & Thrane contact details: 

E-mail	<a href="mailto:solutions@thrane.com">mailto:solutions@thrane.com</a>
Web	<a href="http://www.thrane.com">http://www.thrane.com</a>
T&T Distributors	<a href="http://www.thrane.com/Contact/Distributors.aspx">http://www.thrane.com/Contact/Distributors.aspx</a>

Tested on products: SAILOR 250/500 Software version: 1.02

Instructions:

The DWL-2200AP will be used in Access Point Mode in order for wireless handsets, wireless PCs and other wireless devices to get their IP addresses directly from the SAILOR 250/500 built-in DHCP server. See a system overview in picture 1 below.



Picture 1: System Overview

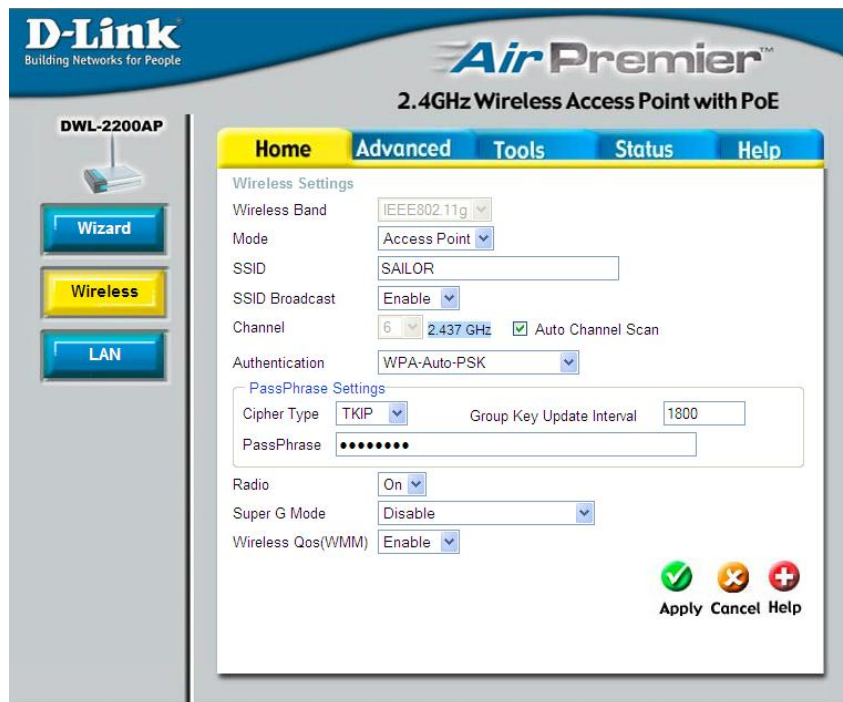
DWL-2200AP Configuration:

The DWL-2200AP will work with its default factory settings but it is recommended to configure some security on the access point in order to restrict unauthorized access to the SAILOR 250/500. To configure the DWL-2200AP connect a PC with a web browser to the Ethernet port of the DWL-2200AP and go to the web page <http://192.168.0.50>. The DWL-2200AP will now ask for a username and password in order to access its built-in web interface. The default username is "admin" and the password is empty. See picture 2 below.



Picture 2: DWL-2200AP Login Screen

In this example the DWL-2200AP will be configured to AP Mode (Access Point) and to use WPA-auto-PSK with ASCII password. See a picture 3 below with the wireless WAN settings.



Picture 3: Wireless WAN Settings

SAILOR 250/500  
Configuration:

No configuration is needed for the SAILOR 250/500 as it will work well using the default factory settings. The DWL-2200AP Access point connected to any of the SAILOR 250/500 LAN ports will automatically use the default Network User Group and default Classification entry. The default Network User Group will allow PCs and other devices to get access to the Internet in Router Mode using Standard Data connection.

Tests performed:

Tested with two laptop computers simultaneous connected wirelessly to the DWL-2200AP Access Point, browsing Internet and doing FTP sessions.  
Tested that access to the SAILOR 250/500 web interface was possible.  
Furthermore a Nokia E65 mobile phone was connected using WiFi and tested successfully downloading emails via the Standard Data connection.

Information in this document is subject to change without notice and does not represent a commitment on the part of Thrane & Thrane A/S. © 2008 Thrane & Thrane A/S. All rights reserved. Printed in Denmark.