

ACCREDITED SOLUTION

EXPLORER[®] – Linksys WRT54G Wireless Router



Document Name: EXPLORER – Linksys WRT54G Wireless Router

Revision: C

Introduction: This document describes the configuration of the EXPLORER terminal and the Linksys WRT54G Wireless-G Broadband Router from a division of Cisco Systems Inc.

Typical Application: Wireless multi-user environments

Product Description: The Linksys WRT54G Wireless-G Broadband Router provides secure wired and wireless data communications from virtually anywhere in the world via the Inmarsat Broadband Global Area Network (BGAN). Once configured a Wireless Mobile Office can be set up in less than 5 minutes.

The Linksys Router is three devices in one box, a Wireless Access Point, which enables connectivity of both 802.11g and 802.11b devices to the EXPLORER terminal and there's a built-in 4-port full-duplex 10/100 Switch to connect wired-Ethernet devices together. Connect up to four computers directly, or attach more hubs and switches to further expand the network. Finally, the Router function ties it all together and lets your whole network share the same EXPLORER terminal.



The push button setup feature makes it easy to configure the wireless devices. Just push the button on the router and on the other SecureEasySetup-enabled wireless device to automatically create an encryption-secured wireless connection. Wi-Fi Protected Access™2 (WPA2) protects data and privacy with up to 128-bit industrial-strength encryption.

The Linksys Router has a built-in DHCP server and SPI firewall to protect computers against intruders and most known Internet attacks, supports VPN pass-through, and can be configured to filter internal users' access to the Internet.

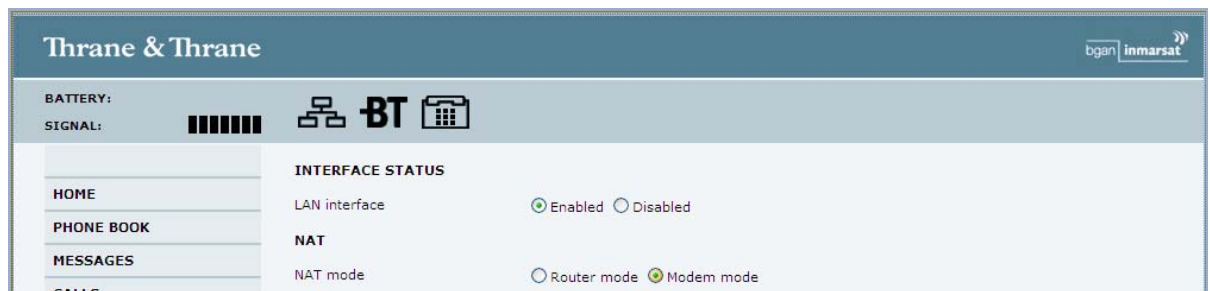
Linksys contact details:
E-mail: <mailto:support@linksys.com>
Phone: +1 800 326 7114 (LINKSYS)
Web site: <http://www.linksys.com/international>

Thrane & Thrane contact details:
E-mail: <mailto:solutions@thrane.com>
Phone: +45 3955 8800
Web site: <http://www.thrane.com>

Tested on products: EXPLORER 300 Software version: 2.01
EXPLORER 500 Software version: 2.01

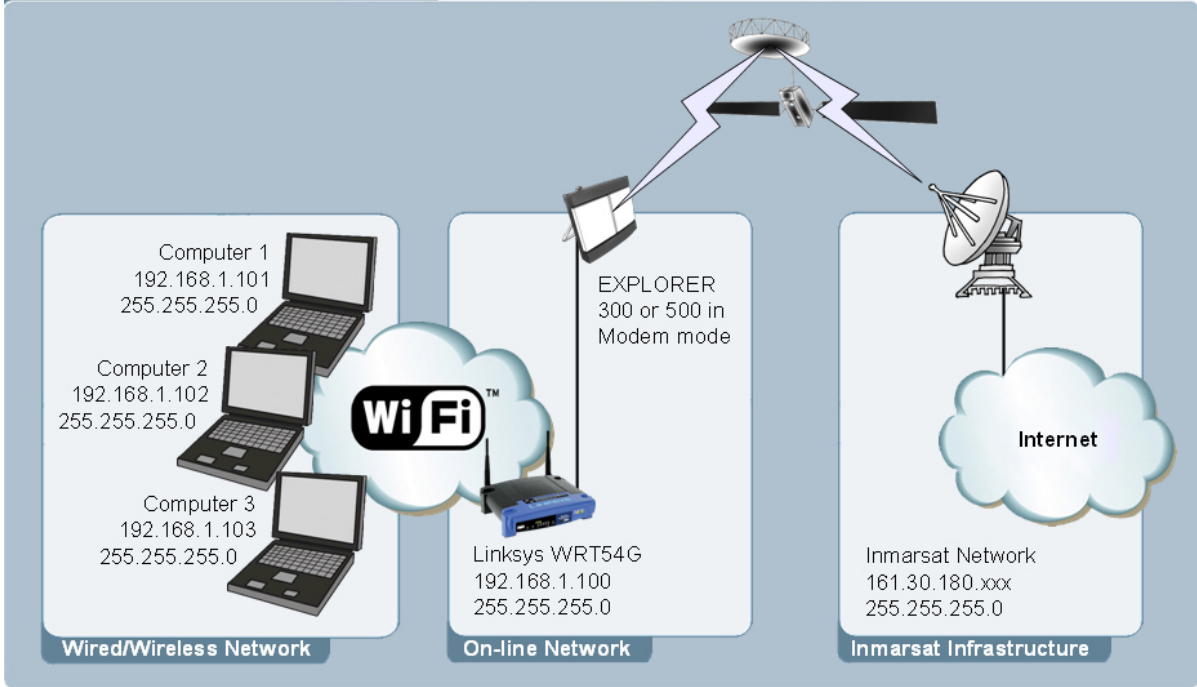
Linksys: WRT54G Software version: 7.00.1 (European)

Instructions: Set the EXPLORER terminal in Modem mode (bridge mode). This can be done from the built-in web interface by entering <http://192.168.0.1> in your Microsoft Internet Explorer, click on Settings – Interfaces – LAN and change from Router to Modem mode.



Click on Apply and reboot the terminal to save the new setting.

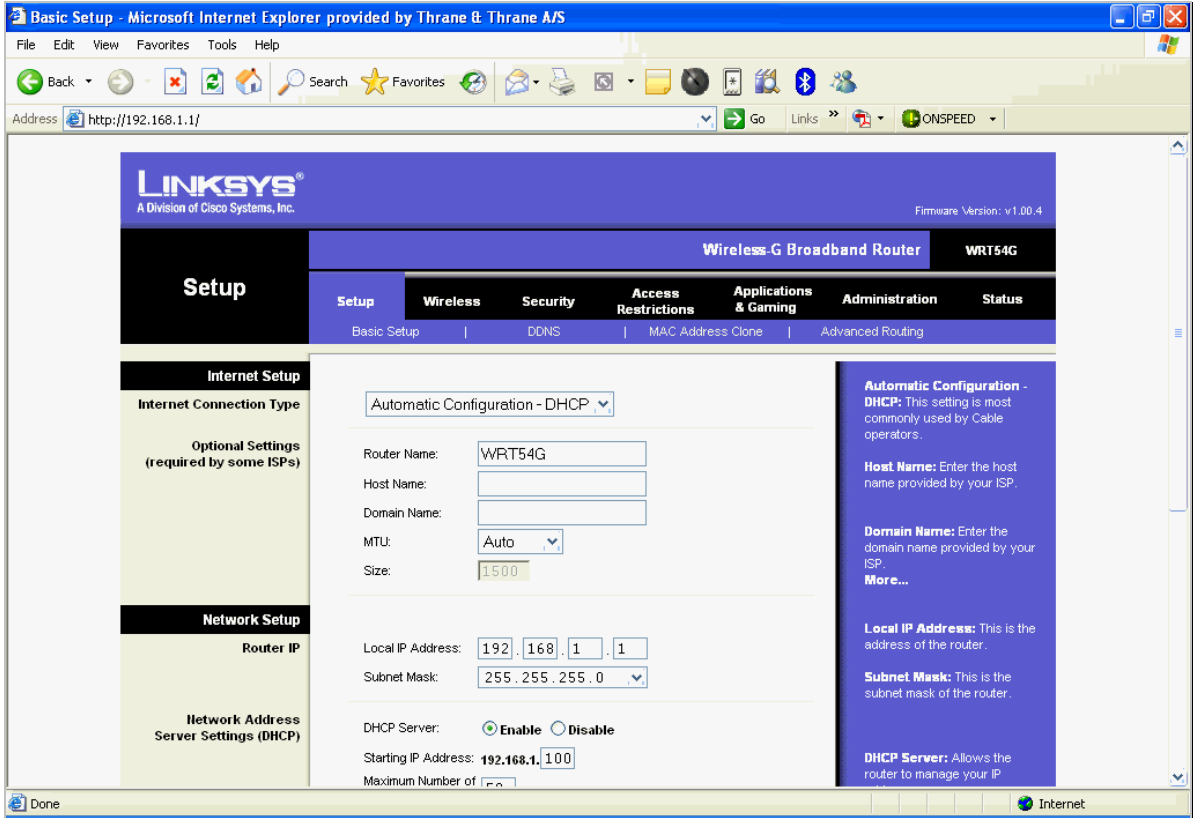
Wireless Multi-User Network Overview



For easy configuration of the Linksys router use the wizard on the included CD-ROM or follow the Quick Installation Guide and the Web-based Utility seen below.

To access the Web-based Utility, launch Internet Explorer or Netscape Navigator, and enter the Router's default IP address, 192.168.1.1, in the Address field. Then press Enter.

A password request window will appear. Leave the User Name field blank. The first time you open the Web-based Utility, use the default password admin.



It is strongly recommended to take the following security precautions (at least steps 1 through 5 should be followed):

1. Change the default SSID.
2. Disable SSID Broadcast.
3. Change the default password for the Administrator account.
4. Enable MAC Address Filtering.
5. Change the SSID periodically.
6. Use the highest encryption algorithm possible. Use WPA if it is available. Please note that this may reduce your network performance.
7. Change the WEP encryption keys periodically.

For information on implementing these security features, refer to "Chapter 6: Configuring the Wireless-G Broadband Router" in the Linksys manual.

Tested:

All tests performed on Standard Data and Streaming Data:

- #1 Three computers connected, both wired and wireless was tested
- #2 5MB file ftp up- and down-load using MS Internet Explorer 6.0
- #3 MS Office Outlook e-mail via Cisco Systems VPN Client
- #4 Internet web-browsing with and without VPN
- #5 Terminal software upload

Information in this document is subject to change without notice and does not represent a commitment on the part of Thrane & Thrane A/S.
© 2007 Thrane & Thrane A/S. All rights reserved. Printed in Denmark.